

IRIS Exchequer Stock Forecasting module

Optimise efficiency with this powerful and proven demand planning and production planning solution...

Stock forecasting is a highly complex and time consuming function within any business. IRIS Exchequer's Stock Forecasting module offers a range of functionality designed to ensure your business has the right products in stock at the right time. Our entry level offering predicts sales and usage thus enabling you to maintain your stock at optimum levels. Other add-ons include automated purchase order creation, production works orders and production resource planning.

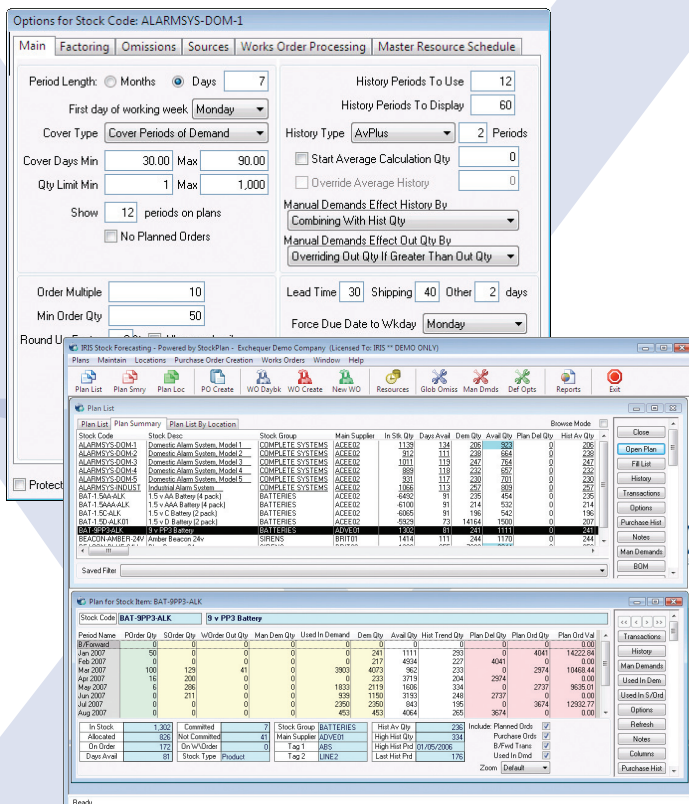
Optimise your stock holdings with automated demand forecasting:

- A tendency to carry too much stock, results in cash, vital to any business, being tied up in unnecessarily high stock levels. IRIS Exchequer's Stock Forecasting module calculates stock for you based on past transactions and seasonal trends
- Avoiding stock shortages and having the correct stock available enables sales orders to be fulfilled on time, contributing towards customer satisfaction
- Having the right stock at the right time enables your production staff to make the best use of their time

IRIS Exchequer's comprehensive set of parameters enables this Stock Forecasting module to work in whatever way your individual business requires. IRIS Exchequer can accurately forecast stock requirements and increase your productivity.

Demand forecasting key benefits:

- Forecasts your future sales based on sales history averages or trends, customer schedules, annual company/product growth with monthly/seasonal factoring and manual overrides
- Plans your future purchases to cover sales and usage based on a min/max periodic cover system or min/max quantities with full support for lead times, ship times, minimum order quantities or minimum order multiples
- Powerful multiple trial build with the option to explode through all sub-assemblies to use full potential based on components or to use 'in stock' quantities of sub-assemblies only
- Facilities to combine sales historical demand information from several different stock items into a single plan and purchase as a single item. You can assign a multiplier to each source item to cope with the same item being sold under different stock codes as different pack quantities
- Includes a comprehensive works ordering system with automatic creation of works orders based on forecasts; back to back works order creation from sales orders; work in progress functionality; substitutions; part completions and trial builds etc
- Powerful filters and reporting to let you work with just the items you want to
- Automatically creates purchase orders
- Seamless links to the core accounts to extract stock, builds and sales history etc
- Full multi-location stock support
- Fully networked multi-user support with individual user permissions (password based logins)
- Easy to use and highly configurable screens and lists - many of these can include your own choice of columns, sort orders and sizes and these are all retained specific to each user
- Working periods can be set up as any number of days from 1 to 365 or you can opt to work in calendar months. Each item can have different period settings or this can be sourced from the items' stock group, supplier or from the global settings. When viewing the main plan screen you can zoom in and out in terms of period length letting you view the forecast in days, weeks, fortnightly, four weekly or monthly



Demand forecasting key benefits continued:

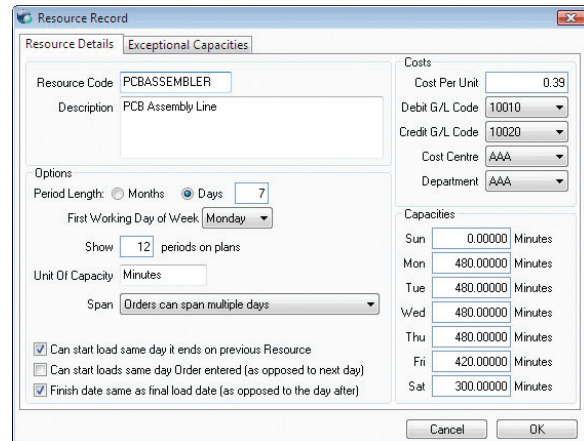
- Includes powerful facilities to handle forecasts and demands for new items which have never been sold or built before. For example you can use demand from obsolete items to drive the forecast for new items
- Quickly and easily remove entire customers' past and future demand from the forecasts. The customers' history is still retained and can be viewed but it simply no longer drives future demand
- In addition to viewing forecasts in terms of quantities you can also view the forecasts in terms of 'finance'. You can view values of historical sales, values of predicted future sales and values of predicted stock holdings throughout the year



The screenshots show the IRIS Stock Forecasting software interface. The top window displays a table of suggested orders with columns for Stock Code, Description, Supplier, and Due Date. Below this is a 'Purchase Order Item' window showing details for a specific item. The middle window shows a 'Plan List' with columns for Stock Code, Description, Stock Group, and Main Supplier. The bottom window shows a 'History' window with a line graph and a table of historical transactions.

Manage your production resources more effectively with Production Resource Planning

Anybody involved the complex area of production planning understands how making sure valuable resources are used effectively can have a significant impact on both sales and profitability.



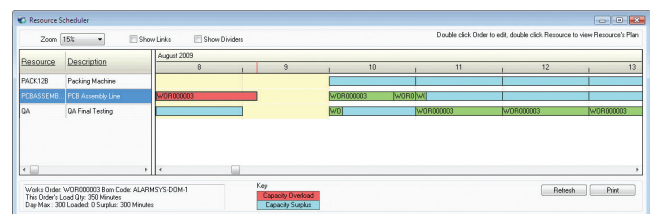
The screenshot shows the 'Resource Record' window. It includes fields for Resource Code (PCBASSEMBLER), Description (PCB Assembly Line), and various options like Period Length (Days: 7) and First Working Day of Week (Monday). On the right, there are sections for Costs (Cost Per Unit: 0.39) and Capacities (Sun: 0.00000, Mon: 480.00000, etc.).

With IRIS Stock Forecasting's Resource planning option, each resource can have various parameters configured including default costs and capacities. These flexible options can be set up with regular daily capacities but also exceptional capacities to cater for seasonal variances i.e. Christmas or service close downs, etc.

Each works order has its own schedule based on the free availability of the resources required to build it. This resource schedule can be manually changed for each works order. In addition to the cost of the components the cost of the resources can also be included in the total cost of any Bill of Material item being built on the order.

A Resource Plan can be viewed showing the current loads and free capacity over the forthcoming periods. Periods for which the capacity of the resource has been exceeded are highlighted.

A Gantt type scheduler screen gives an easy to understand visual overview for each resource and the orders scheduled to utilise the item for each day.



The screenshot shows the 'Resource Scheduler' window. It features a Gantt chart with columns for days (9, 10, 11, 12, 13) and rows for resources (PACK12B, PCBASSEMB, DA). The chart shows resource usage over time, with some periods highlighted in yellow to indicate capacity constraints.

For more information, please call
NZ (09) 307 5978 AUS (02) 9380 6220
 or visit www.irissql.com